



AMERICANA

OUTDOORS

Elements for Life *Outside.*[™]



www.AMERICANA.com

Who we are

Americana is a family-owned company making high-quality recreational amenities for communities across the country. Our products are American-made and engineered to meet the demands of outdoor living. From shelters and seating to sports equipment, Americana offers architects, general contractors and other clients a full range of beautiful and fully customizable furnishings to create a complete outdoor environment that helps communities work, play and live better.

Pillars of Distinction



Engineering for Outdoor Living

We build products for every climate, every terrain and every purpose to meet the demands of outdoor living.



Shaping an Entire Outdoor Experience

From shelters and seating to sports equipment, Americana creates complete outdoor environments that help communities work, play, and live better.



Providing Service that Comes Naturally

At Americana everyone is family and our clients are friends. When you care about the people around you and love what you do, great and knowledgeable service just comes naturally.



4-5

HIP ROOF STRUCTURES
NAVAJO SERIES
MOJAVE SERIES



6-11

GABLE ROOF STRUCTURES
ILLINI SERIES
MERAMEC SERIES
COLONIAL SERIES



12-15

GAZEBOS
APACHE SERIES
AZTEC SERIES



16-17

SMALL SHADE STRUCTURES
CHEROKEE SERIES



18-23

SUNSHADE STRUCTURES
LATTICE PERGOLA SERIES
STAMPED PERGOLA SERIES
SHADE SAIL SERIES



24-27

WALKWAYS & ENTRANCES
WALKWAYS
ENTRYWAY COVERS



28-29

SPORTS STRUCTURES
SHAWNEE SERIES



30-35

INFORMATION
SITE FURNISHINGS
SUPPORT & WARRANTY
OPTIONS & ACCESSORIES
FRAME STYLE & FINISHES
COLOR OPTIONS

NAVAJO & MOJAVE SERIES

FEATURED PROJECT

Harley Davidson Manufacturing Break Area



Structure: 18x18' Double Tier Navajo Shelters



Location: Wentzville, Missouri



Design Notes: 18" Standing Seam Roof Panels



Frame Color: 510 Black

Roof Color: 860 Copper Penny

NAVAJO & MOJAVE PRODUCT FEATURES

Sizes: 12x12' minimum, extended sizes up to 40x60'

Roof Pitch: Standard 4/12

Optional Roof Pitch: 6/12

Structure: Four sided pre-fabricated, powder coated steel frame

Frame: Tubular

Gutters: Standard extruded aluminum on Navajo models, Mojave models are gutterless

Roof: Structural, interlocking panels for superior strength with less supports

Standard Roof Panels: 24" wide "W" design in high strength aluminum or galvalume

Optional Roof Panels: 36" galvalume "R" panel, 8" aluminum flat panel, 3" sandwich panel, tongue & groove wood

Add-On Accessories: Cupola, double tier roof, dutch hip roof, aluminum railing



ILLINI SERIES



FEATURED PROJECT

Renfro Middle School Lunch Area



Structure: 14x20' Illini Shelter



Location: Collinsville, Illinois



Design Notes: 24" Structural "W" Roof Panels



Frame Color: 550 White

Roof Color: 515 Regal Blue

ILLINI PRODUCT FEATURES

Sizes: Ranging from 6-50' wide and 12-84' long

Roof Pitch: Standard 4/12

Optional Roof Pitch: 1/12 - 12/12

Structure: Pre-fabricated, powder coated steel frame

Frame: Tubular

Gutters: Standard extruded aluminum (wood roof excluded)

Roof: Structural, interlocking panels for superior strength with less supports

Standard Roof Panels: 24" wide "W" design in high strength aluminum or galvalume

Optional Roof Panels: 36" galvalume "R" panel, 8" aluminum flat panel, 3" sandwich panel, tongue & groove wood

Add-On Accessories: Aluminum railing



MERAMEC SERIES



FEATURED PROJECT

School Playground Picnic Area



Structure: 12x20' Meramec Shelter



Location: Salem, Illinois



Design Notes: Tubular Frame Meramec Shelter



Frame Color: 260 Cranberry

Roof Color: 540 Tan

MERAMEC PRODUCT FEATURES

Sizes: Ranging from 20-41' wide and 20-54' long

Roof Pitch: Standard 3/12

Structure: Pre-fabricated, powder coated steel frame

Frame: Tubular

Gutters: Standard extruded aluminum (wood roof excluded)

Roof: Structural, interlocking panels for superior strength with less supports

Standard Roof Panels: 24" wide "W" design in high strength aluminum or galvalume

Optional Roof Panels: 3" sandwich panel, tongue & groove wood with shingles

Add-On Accessories: Aluminum railing



COLONIAL SERIES



FEATURED PROJECT

Lake Side Campground Picnic Area



Structure: 12x20' Colonial Shelter



Location: Norman, Oklahoma



Design Notes: Standard Colonial Shelter without Gable Fill



Frame Color: 255 Burgundy

Roof Color: 555 Dark Green

COLONIAL PRODUCT FEATURES

Sizes: Ranging from 12-22' wide and 20-40' long

Roof Pitch: Standard 3/12

Structure: Pre-fabricated, powder coated aluminum components

Frame: Tubular aluminum

Gutters: Extruded aluminum, purlins and ridge beams are standard

Roof: Structural, interlocking panels for superior strength with less supports

Standard Roof Panels: 24" wide "W" design in high strength aluminum or galvalume

Optional Roof Panels: 8" aluminum flat panel, 3" sandwich panel

Gable Fill: Aluminum gable fill kit is included

Add-On Accessories: Aluminum railing



APACHE SERIES

FEATURED PROJECT *Sports Complex Picnic Shelter*



Structure: 16' Diameter Apache Shelter



Location: Melrose Park, Illinois



Design Notes: Single tier Apache with Cupola



Frame Color: 215 Yellow

Roof Color: 555 Dark Green

APACHE PRODUCT FEATURES

Sizes: 16-44' diameter

Roof Pitch: Standard 3/12

Optional Roof Pitch: 4/12 - 8/12

Structure: Hexagonal design, pre-fabricated, powder coated steel frame

Frame: Tubular

Gutters: Extruded aluminum gutters sent on standard models & most roof options

Roof: Structural, interlocking panels for superior strength with less supports

Standard Roof Panels: 24" wide "W" design in high strength aluminum or galvalume

Optional Roof Panels: 36" galvalume "R" panel, 8" aluminum flat panel, 3" sandwich panel, 18" wide standing seam panel, and tongue & groove wood with shingles

Add-On Accessories: Cupola, double tier roof, aluminum railing, benches



AZTEC SERIES

FEATURED PROJECT *Gill Bass Memorial Park*



Structures: 18' Diameter Aztec Shelter



Location: Milton, Florida



Design Notes: Double Tier Shelter with Custom Railing



Frame Color: 510 Black

Roof Color: 860 Copper Penny

AZTEC PRODUCT FEATURES

Sizes: 16-54' diameter

Roof Pitch: Standard 3/12

Optional Roof Pitch: 4/12 - 8/12

Structure: Octagonal design, pre-fabricated, powder coated steel frame

Frame: Tubular

Gutters: Extruded aluminum gutters sent on standard models & most roof options

Roof: Structural, interlocking panels for superior strength with less supports

Standard Roof Panels: 24" wide "W" design in high strength aluminum or galvalume

Optional Roof Panels: 36" galvalume "R" panel, 8" aluminum flat panel, 3" sandwich panel, 18" wide standing seam panel, and tongue & groove wood with shingles

Add-On Accessories: Cupola, double & triple tier roof, aluminum railing, benches



CHEROKEE SERIES



FEATURED PROJECT

Lake Side Rest Area



Structure: 8x10' Cherokee Shelter



Location: Rend Lake, Illinois



Design Notes: Double Aluminum Benches



Frame Color: 535 Ivory

Roof Color: 555 Dark Green

CHEROKEE PRODUCT FEATURES

Sizes: Ranging from 8-12' wide and 8-12' long

Roof Pitch: Standard 3/12

Structure: Pre-fabricated, powder coated steel frame

Frame: Tubular

Gutters: Extruded aluminum gutters sent on standard models & most roof options

Roof: Structural, interlocking panels for superior strength with less supports

Standard Roof Panels: 24" wide "W" design in high strength aluminum or galvalume

Optional Roof Panels: 36" galvalume "R" panel, 8" aluminum flat panel, 18" wide standing seam panel

Add-On Accessories: Bulletin boards, bench, table & bench, double bench



PERGOLA SERIES

FEATURED PROJECT

Downtown Rest & Entertainment Area



Structure: 20x40' Aluminum Pergola



Location: Henderson, Kentucky



Design Notes: Custom lighting & wooden benches/planters



Frame Color: Aged Bronze

Roof Color: Aged Bronze

LATTICE PERGOLA PRODUCT FEATURES

Sizes: Custom designed to fit your application

Structure: Pre-fabricated, powder coated aluminum components

Frame: Tubular

Header Options: Curved/straight steel, extruded aluminum, or 3x8" wood grain embossed aluminum

Roof Options: Wood grain embossed aluminum, round extruded aluminum tubes

Add-On Accessories: Fabric drape, roll up curtains



PERGOLA SERIES

FEATURED PROJECT *Retirement Facility Garden Area*



Structure: 6x35' Curved Steel Pergola



Location: Parkville, Maryland



Design Notes: Steel structure, with stamped aluminum panels

Frame Color: 550 White



Roof Color: 250 PW Bronze

STAMPED PERGOLA PRODUCT FEATURES

Sizes: Custom designed to fit your application

Structure: Pre-fabricated, powder coated aluminum or steel components

Frame: Tubular

Header Options: Curved/straight steel, extruded aluminum, or 3x8" wood grain embossed aluminum

Roof Options: Stamped aluminum panels (multiple designs available)

Add-On Accessories: Fabric drape, roll up curtains



SHADE SAIL SERIES

FEATURED PROJECT *Poolside Lounge Area*



Structure: 12x12' One-Post Offset Fabric Shade Sail



Location: Evergreen, Colorado



Design Notes: Offset single posts

Frame Color: 520 Bronze



Roof Color: Sand Solamesh Fabric

SHADE SAIL PRODUCT FEATURES

Sizes: Multiple models & sizes

Structure: Pre-fabricated, powder coated steel frame

Frame: Tubular

Fabric: Maintenance free high strength 100% HDPE round yarn

Fabric Top: Designed to withstand high winds

Optional Roof Options: 10 vibrant colors available



WALKWAY SERIES

FEATURED PROJECT *Outdoor Lunch Area*



Structure: 12x45' Walkway Cover



Location: Farmington, Connecticut



Design Notes: 12' tall posts



Frame Color: 855 Medium Bronze

Roof Color: 520 Bronze

WALKWAY PRODUCT FEATURES

Sizes: Ranging from 6-50' wide and 10-80' long

Roof Pitch: Varies depending on structure needs

Structure: Pre-fabricated, powder coated steel frame with surface mount brackets

Frame: Tubular

Gutters: Standard extruded aluminum

Roof: Structural, interlocking panels for superior strength with less supports

Standard Roof Panels: 24" wide "W" design in high strength aluminum or galvalume

Optional Roof Panels: 36" galvalume "R" panel, 6" extruded aluminum flat panel, 8" aluminum flat panel

Add-On Accessories: Aluminum railing



ENTRY COVERS SERIES

FEATURED PROJECT *Office Building Window Cover*



Structure: 6x24' Imperial Window Cover



Location: Centralia, Illinois



Design Notes: 8" Structural Flat Roof Panels

Frame Color: 520 Bronze



Roof Color: 520 Bronze

ENTRY COVER PRODUCT FEATURES

Sizes: Ranging from 4-10' projection and 4-25' long

Structure: Pre-fabricated, powder coated aluminum components

Gutters: Standard extruded aluminum, 8" or 6" fascia with 4" gutter

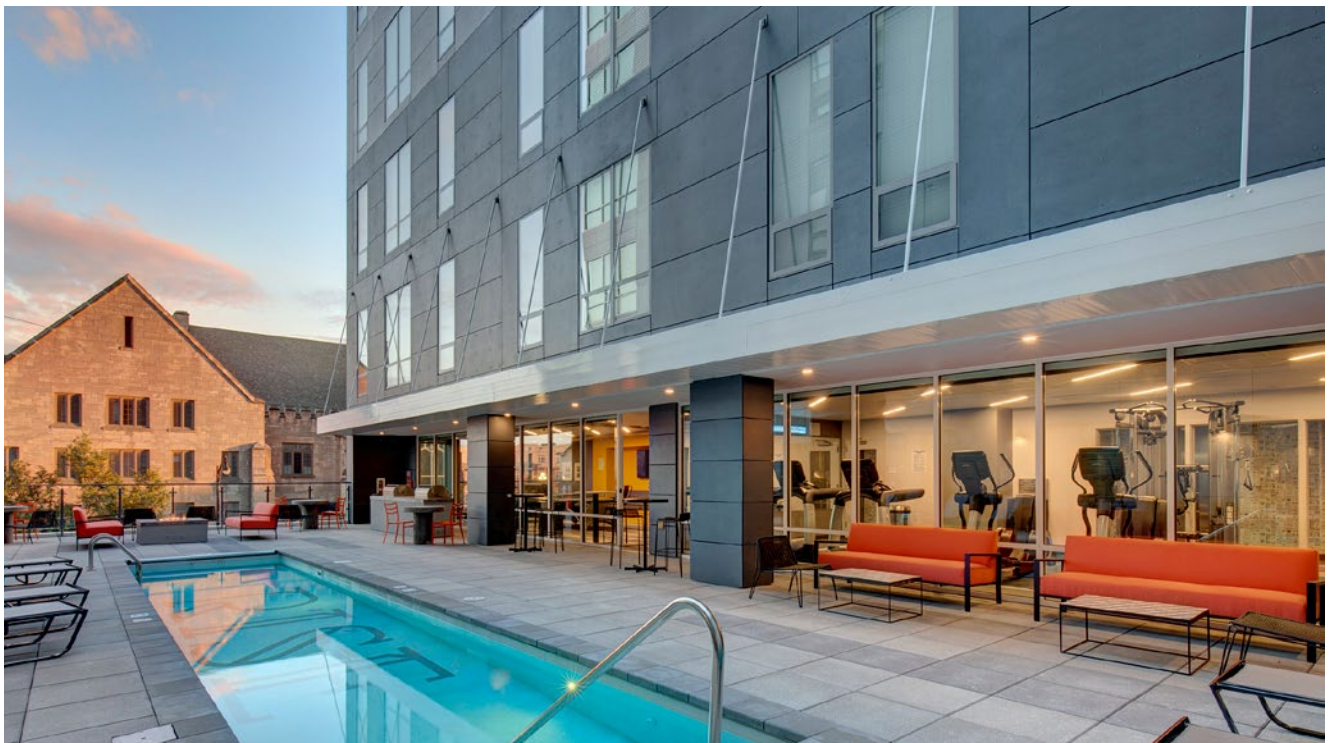
Roof: Structural, interlocking panels for superior strength with less supports

Standard Roof Panels: 24" wide "W" design in high strength aluminum or galvalume

Optional Roof Panels: 36" galvalume "R" panel, 6" extruded aluminum flat panel, 8" aluminum flat panel

Supports: Overhead braces or post models depending on needs or building structure

Add-On Accessories: Extended gutter, crown molding



SPORTS STRUCTURES SERIES

FEATURED PROJECT *Sports Park Bleacher Seating*



Structure: 12x36' Full Cantilever Bleacher Cover



Location: Columbia, Maryland



Design Notes: Embedded mount tubular posts



Frame Color: 270 Quartz Gray

Roof Color: 560 Anodized

SPORTS STRUCTURES PRODUCT FEATURES

Sizes: Varies depending on application and structure needs

Structure: Pre-fabricated, powder coated steel frame

Frame: Tubular

Gutters: Extruded aluminum gutters sent on standard model & most roof options

Roof: Structural, interlocking panels for superior strength with less supports

Standard Roof Panels: 24" wide "W" design in high strength aluminum or galvalume

Optional Roof Panels: 36" galvalume "R" panel, 8" aluminum flat panel, 3" sandwich panel, tongue and groove wood with shingles

Add-On Accessories: Extruded aluminum benches/bleachers





Looking for Premium Quality Site Furnishings to complement your new shelter?
PW Sport/Site & LA Steelcraft, a subsidiary of Americana Outdoors has you covered!

Our selection of various site furnishings are a perfect match to the craftsmanship and
quality of the Americana shelters. Like our shelter products, all of the site furnishings are
100% made in the U.S.A. and have one of the best warranties in the industry.

For more information give us a call at 1-888-442-2925
or visit our website at www.PWathletic.com

Sales & Installation Support

Design and engineering support and documentation to satisfy local requirements: Heavy Snow, Seismic, High Winds, Hail, Custom Designs & Sizes.

Average standard lead times are 6-8 weeks from receipt of approved order. Lead times may vary on design criteria.

Installation and sales support available M-F (8am-5pm) central standard time.

Since Americana is a custom manufacturer, non-standard items are routinely fabricated with no delays. Minimal extra charges may be incurred for engineering.

Warranty Terms

Lifetime Limited Warranty

Lifetime Limited Warranty on aluminum against material failure and corrosion.

25 Year Limited Warranty

25 Year Limited Warranty on steel against material failure and defects.

10 Year Limited Warranty

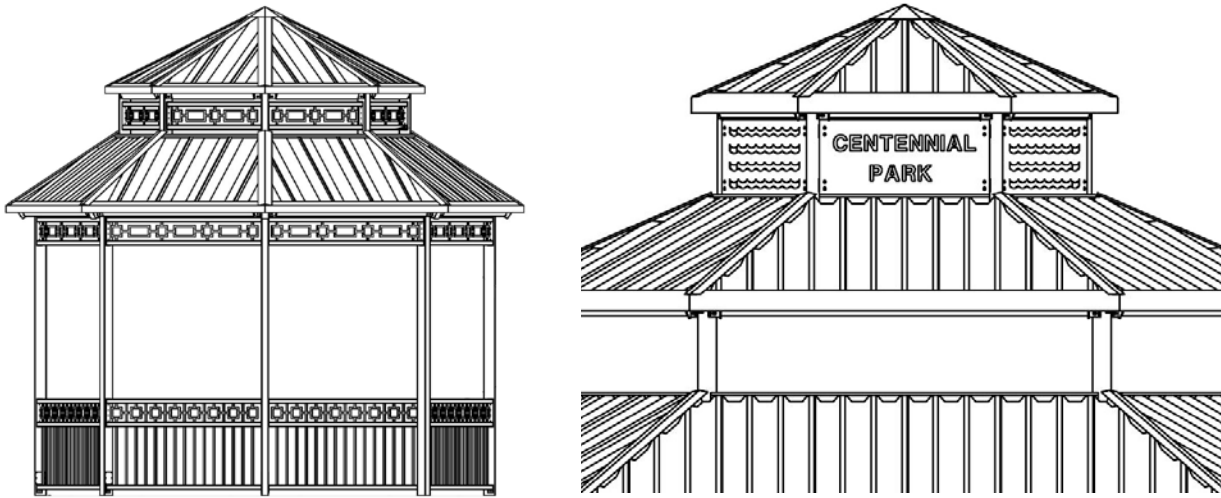
10 Year Limited Warranty on Solamesh Fabrics

10 Year Limited Warranty on all powder coat finishes (200, 500 and 800 series). With the use of Americana's 500 Series Anti-graffiti powder coat finish is guaranteed to allow removal of graffiti with virtually no change to the finish.

Americana will not be responsible for damages caused by others, building settlement, corrosion by moisture, chemical and pollution, or acts of God. Damage caused by vandalism, abnormal use, lack of maintenance, or incorrect installation will not be covered.

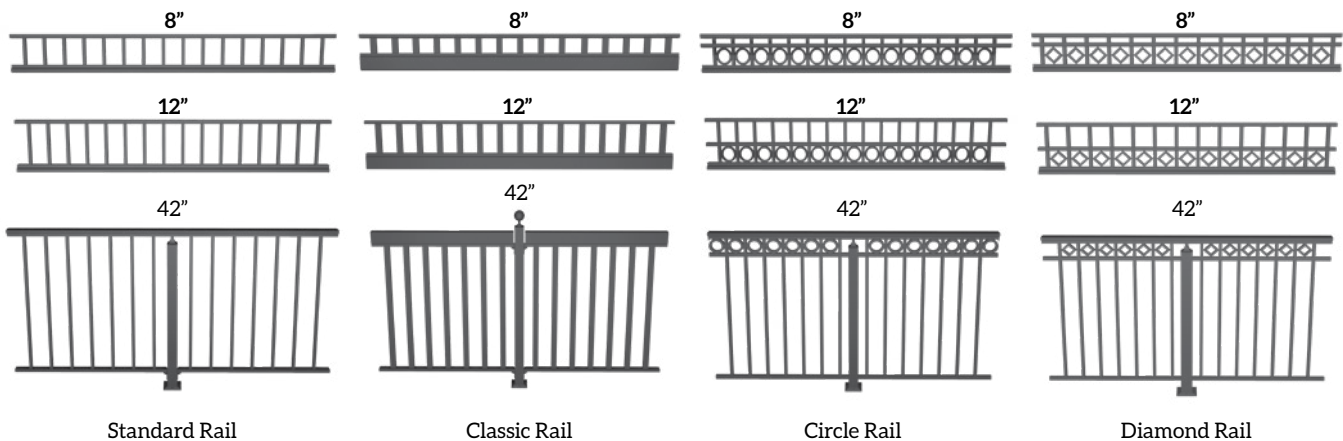
Options & Accessories

Custom Railing & Clerestory Decorative Panels



Railing & Clerestory Panels can be customized to fit almost any application, with endless design possibilities. Perfect for displaying logos, affiliations, sponsors, or location information.

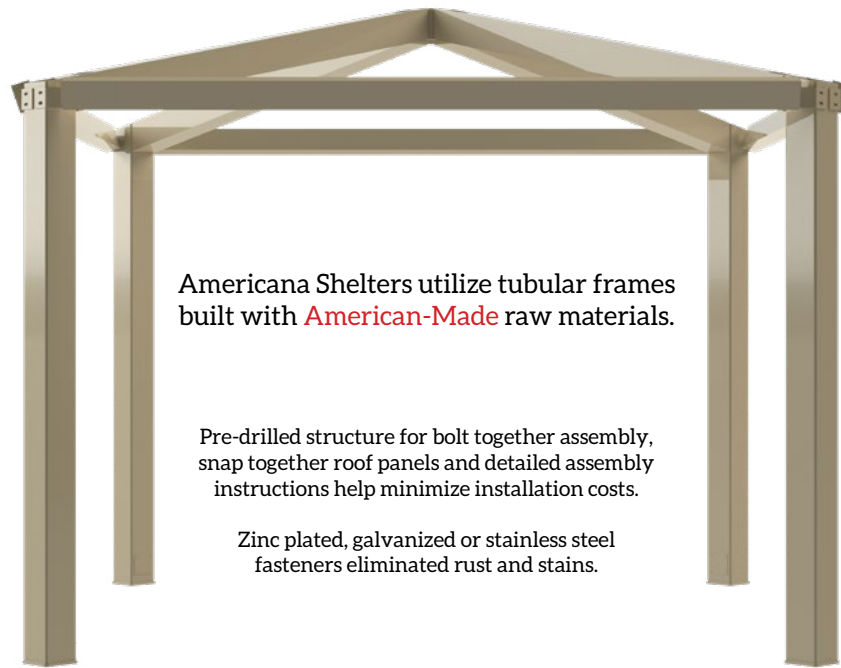
Aluminum Railing Options



Cupola Options



Frame & Post Style



Frame Finishes

Standard: Super durable frame finishes:

The anti-graffiti, super durable polyester TGIC finish, is a powder that is applied 6-9 mils thick then cured at 400 degrees until fused into a smooth glossy permeate coating. This coating meets AAMA 2604-2 specifications and has a much longer life expectancy than the industries standard TGIC. This anti-graffiti coating provides an outstanding finish.

The smooth glossy surface can withstand numerous cleanups with the use of our proprietary chemical cleaner without altering the finish. Paint and marker can be removed completely with only a slight reduction in gloss.

The architectural matte, super durable polyester TGIC finish, is a powder that is applied 6-9 mils thick then cured at 400 degrees into a smooth matte permeate coating. This coating meets AAMA 2604-2 specifications and has a much longer life expectancy than the industries standard TGIC.

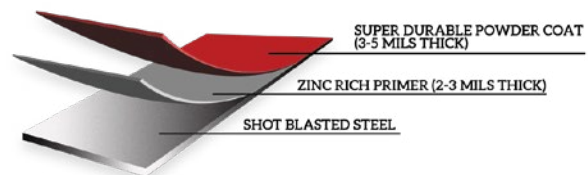
Premium Frame Finish (up charge)

A 2-3 mil thick zinc rich primer is applied prior to a final standard color coat. This premium finish enhances the ability of your structure to combat even the harshest environments and has withstood over 10,000 hours in our salt/fog test chamber. This primer prevents rust from forming and spreading in the event of nicks and scratches in the color coat, providing the ultimate in pre-finished steel structure coatings.

Standard Frame Finish



Premium Frame Finish (up charge)



Frame & Fabric Colors

Super Durable Frame Color Options



Super Durable & Anti Graffiti Frame Color Options



Fabric Shelter Color Options



SolaMesh™, an industry leading performance fabric for shade sails, shade and fabric structures, awnings and other applications, is an exclusive new offering. Made from highly stable and color fast HDPE monofilament and tape. It provides best-in-class strength, value, and longevity.

Roof Panel Colors & Options

6" Aluminum Extruded Flat Panel



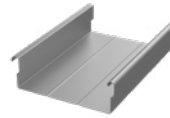
Coverage Width - 6"
Minimum Slope - 1/2:12
Thickness - .065"
Finish - Smooth Gloss Finish
Coatings - Super Durable Polyester
Rib Spacing - N/A
Rib Height - 2-7/8"

Compatible only with Walkways & Entry Covers



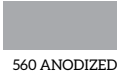
Powder coat finish available in all frame colors.
Full RAL color palette available at additional cost.

8" Aluminum Structural Flat Panel (Matte Finish)

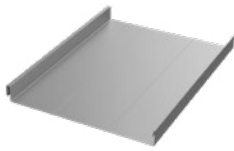


Coverage Width - 8"
Minimum Slope - 1/2:12
Thickness - .024", .032" & .040"
Finish - Smooth Matte Finish
Coatings - DuraCoat XT40 Ceranamel
Rib Spacing - N/A
Rib Height - 2-5/8"

Compatible with all model shelters except for Meramec & Pergola

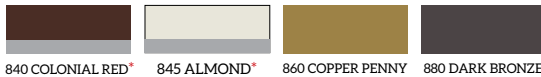


18" Galvalume® 24 Gauge Standing Seam Panel



Coverage Width - 18"
Minimum Slope - 1/2:12
Gauge - 24
Finish - Smooth
Coatings - Siliconized Polyester
Rib Spacing - N/A
Rib Height - 1-3/4"

Compatible with all model shelters except for Meramec, Colonial, & Pergola



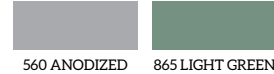
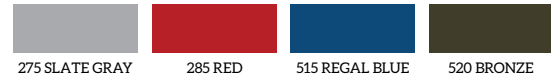
Colors containing asterisks have a wash coat bottom side

24" Aluminum Structural "W" Panel

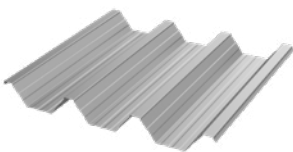


Coverage Width - 24"
Minimum Slope - 1/2:12
Thickness - .038" & .024" (560 Anodized Only)
Finish - Stucco Embossed
Coatings - DuraCoat XT40 Ceranamel
Rib Spacing - 8" on center
Rib Height - 2-1/2"

Compatible with all model shelters except for Pergola



24" Galvalume® 24 Gauge Structural "W" Panel



Coverage Width - 24"
Minimum Slope - 1/2:12
Gauge - 24
Finish - Smooth
Coatings - Siliconized Polyester
Rib Spacing - 8" on center
Rib Height - 2-1/2"

Compatible with all model shelters except for Colonial & Pergola



Colors containing asterisks have a wash coat bottom side

36" Galvalume® 26 Gauge "R" Panel



Coverage Width - 36"
Minimum Slope - 1/2:12
Gauge - 26
Finish - Smooth
Coatings - Siliconized Polyester
Rib Spacing - 12" on center
Rib Height - 1-1/4"

Compatible with all model shelters except for Meramec, Colonial & Pergola



Colors containing asterisks have a wash coat bottom side

Additional Roof Options



3" thick sandwich panel
White stucco finish with foam core

Compatible with all model shelters except for Cherokee, Pergola, Walkways & Entry Covers



Tongue and Groove Wood
1) Southern Yellow Pine
2) Western Cedar

Utilized as sub roofing for shelters using the 18" standing seam panel.



PO Box 1290, Salem IL 62881
1-800-851-0865, Fax: 1-618-548-2890
Sales@Americana.com
www.Americana.com



Version	Revision Date
1.0	11/05/19

2020 SHELTER CATALOG